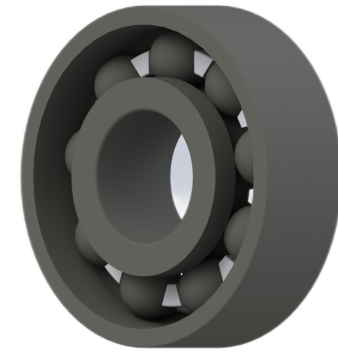


LILY BEARING



b:	25°		Contact Angle
R _{3,4} :	min 1	mm	Chamfer Dimension
R _{1,2} :	min 2	mm	Chamfer Dimension
D1:		mm	Shoulder Dia Of Outer Ring
d1:	133.2	mm	Shoulder Dia Of inner Ring
a:	46.7	mm	Distance From Side Face To Pressure Point

LILY[®]

SHANGHAI LILY BEARING LIMITED

Email: lilybearing@lily-bearing.com

Part
Number

CE7022SI
Ceramic Angular Contact Ball Bearings