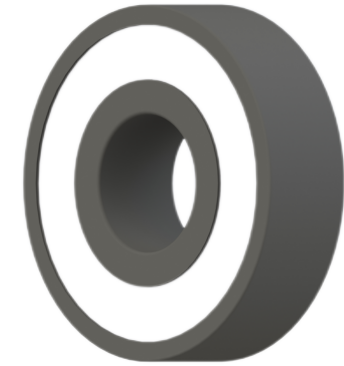


LILY BEARING



b :	25°	Contact Angle
R _{3,4} :	min 0.15 mm	Chamfer Dimension
R _{1,2} :	min 0.3 mm	Chamfer Dimension
D1:	53.6 mm	Shoulder Dia Of Outer Ring
d1:	49.6 mm	Shoulder Dia Of inner Ring
a:	15.5 mm	Distance From Side Face To Pressure Point

LILY[®]

SHANGHAI LILY BEARING LIMITED

Email: lilybearing@lily-bearing.com

Part
Number

CE71809SCPP
Ceramic Angular Contact Ball Bearings