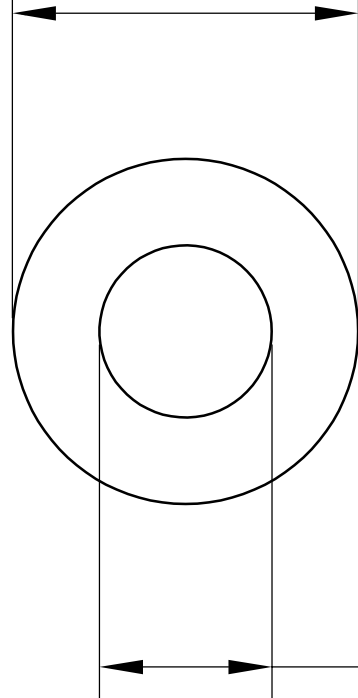
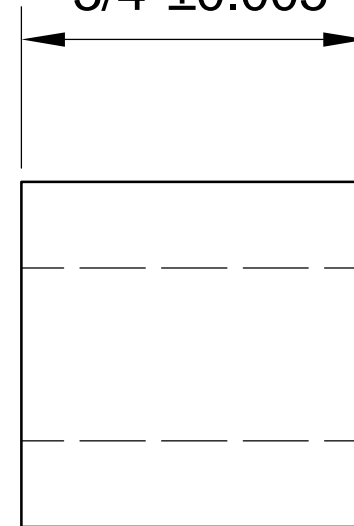




$\text{Ø}0.625''+0.002$



$3/4''\pm 0.005$



$0.375''+0.002$

**LILY<sup>®</sup>**

SHANGHAI LILY BEARING LIMITED

Email: [lilybearing@lily-bearing.com](mailto:lilybearing@lily-bearing.com)

Part  
Number

2610T15 Light Duty  
Dry-Running Nylon Sleeve Bearing