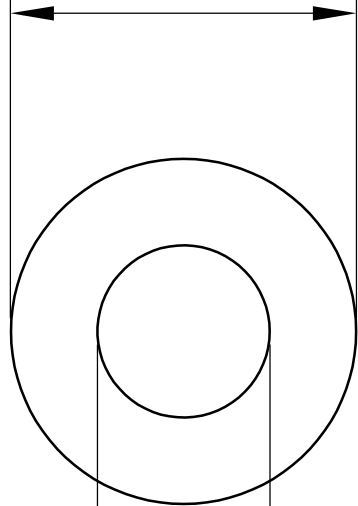
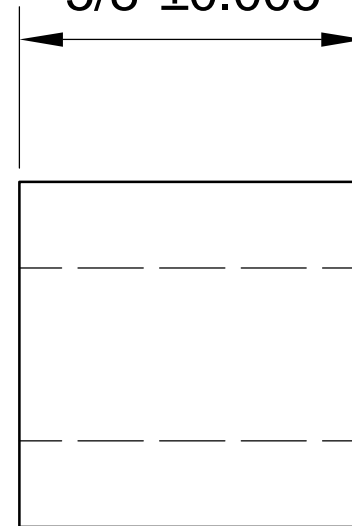


$\text{Ø}0.8125''+0.002$



$5/8''\pm 0.005$



$0.625''+0.002$



**LILY<sup>®</sup>**

SHANGHAI LILY BEARING LIMITED

Email: [lilybearing@lily-bearing.com](mailto:lilybearing@lily-bearing.com)

Part  
Number

2610T27 Light Duty  
Dry-Running Nylon Sleeve Bearing