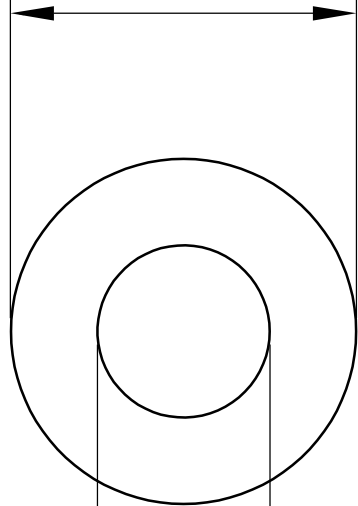
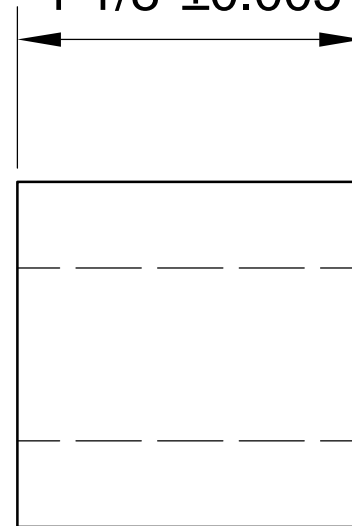




$\text{Ø}1.125''+0.002$



$1\ 1/8''\pm 0.005$



$0.875''+0.002$



LILY[®]

SHANGHAI LILY BEARING LIMITED

Email: lilybearing@lily-bearing.com

Part
Number

2610T37 Light Duty
Dry-Running Nylon Sleeve Bearing