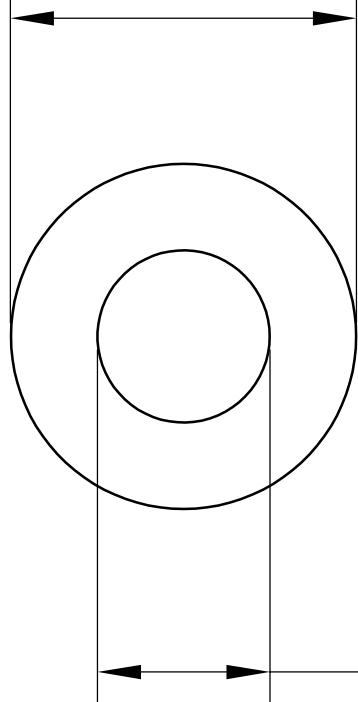
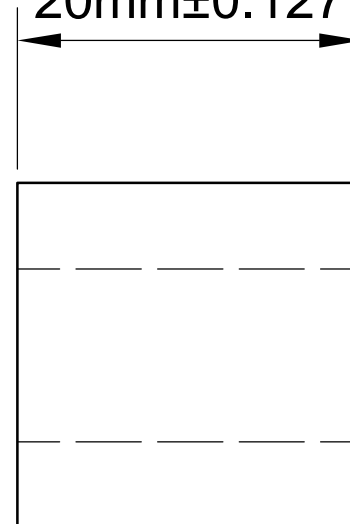


$\text{Ø}16\text{mm}\pm 0.1016$



$\text{Ø}10\text{mm}\pm 0.2032$

$20\text{mm}\pm 0.127$



LILY[®]

SHANGHAI LILY BEARING LIMITED

Email: lilybearing@lily-bearing.com

Part
Number

6389K752 Light Duty
Dry-Running Nylon Sleeve Bearing