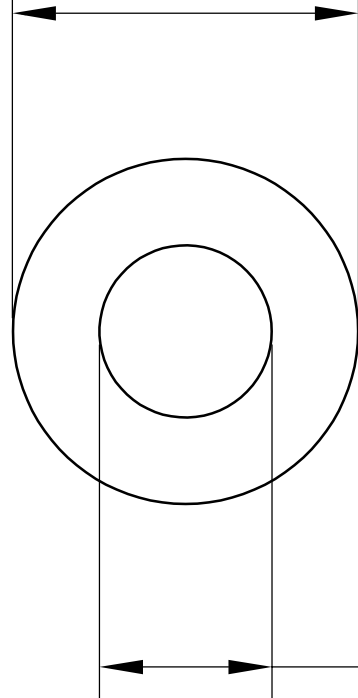


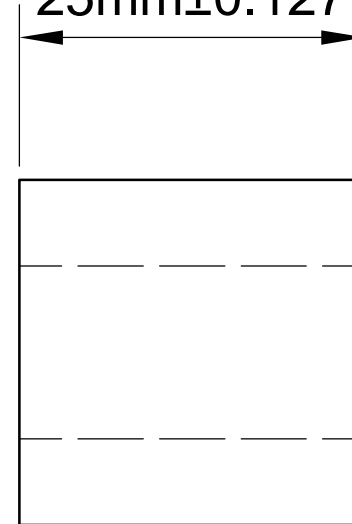


$\text{Ø}15\text{mm}\pm 0.1016$



$\text{Ø}12\text{mm}\pm 0.2032$

$25\text{mm}\pm 0.127$



**LILY**<sup>®</sup>

SHANGHAI LILY BEARING LIMITED

Email: [lilybearing@lily-bearing.com](mailto:lilybearing@lily-bearing.com)

Part  
Number

6389K757 Light Duty  
Dry-Running Nylon Sleeve Bearing