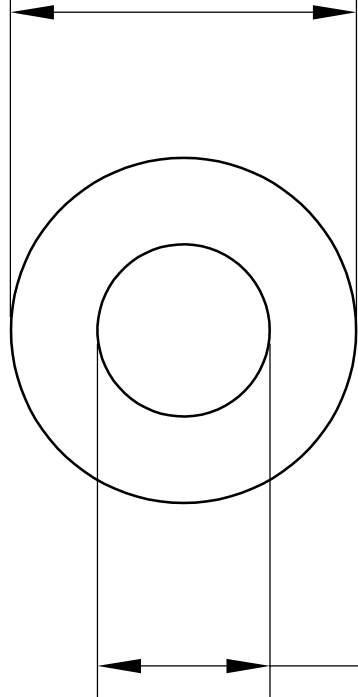
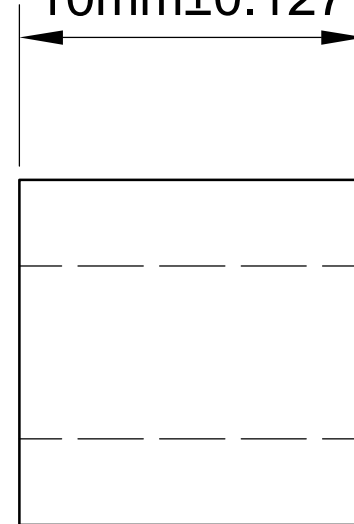


$\text{Ø}19\text{mm}\pm0.1016$



$\text{Ø}15\text{mm}\pm0.2032$

$10\text{mm}\pm0.127$



**LILY<sup>®</sup>**

SHANGHAI LILY BEARING LIMITED

Email: [lilybearing@lily-bearing.com](mailto:lilybearing@lily-bearing.com)

Part  
Number

6389K785 Light Duty  
Dry-Running Nylon Sleeve Bearing