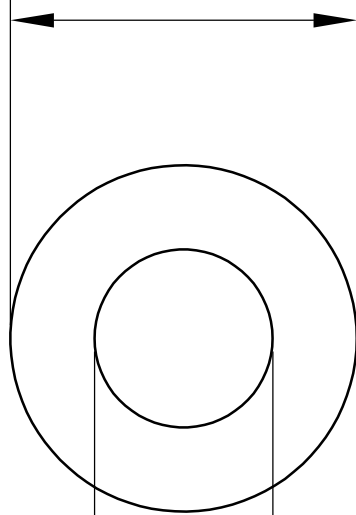
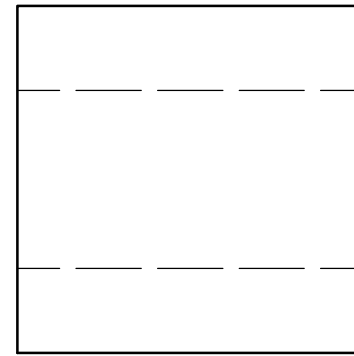


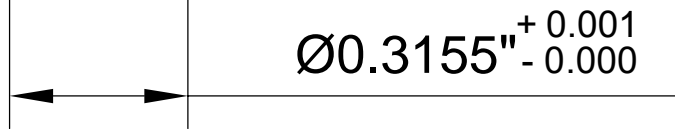
$\text{Ø}0.3758''^{+0.001}_{-0.000}$



$1/4'' \pm 0.005$



$\text{Ø}0.3155''^{+0.001}_{-0.000}$



LILY[®]

SHANGHAI LILY BEARING LIMITED

Email: lilybearing@lily-bearing.com

Part
Number

6621K124 Chemical-Resistant
Dry-Running PEEK Sleeve Bearing