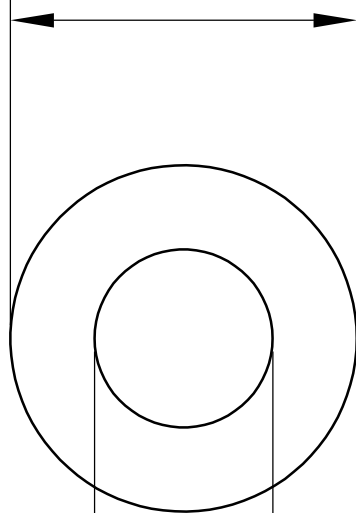
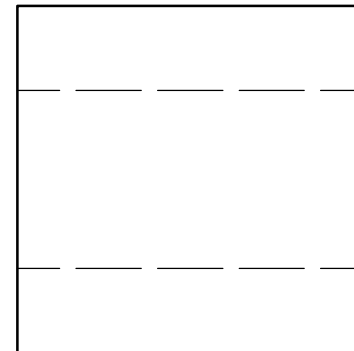


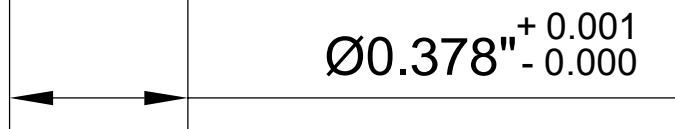
$\text{Ø}0.5635^{+0.001}_{-0.000}$



$3/8 \pm 0.005$



$\text{Ø}0.378^{+0.001}_{-0.000}$



**LILY<sup>®</sup>**

SHANGHAI LILY BEARING LIMITED

Email: [lilybearing@lily-bearing.com](mailto:lilybearing@lily-bearing.com)

Part  
Number

6621K132 Chemical-Resistant  
Dry-Running PEEK Sleeve Bearing