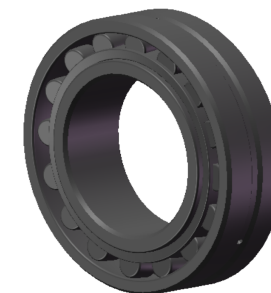


LILY BEARING



Tapered Bore, Taper 1:12

D1:	≈141	mm	Shoulder/Recess Dia of Outer Ring
d1:	≈106	mm	Shoulder Dia of Inner Ring
b:	6	mm	Width Of Lubrication Groove
K:	3	mm	Dia of Lubrication Hole
R _{1,2} :	min 2	mm	Chamfer Dimension

LILY[®]

SHANGHAI LILY BEARING LIMITED

Email: lilybearing@lily-bearing.com

Part
Number

22218 EK Spherical Roller Bearings