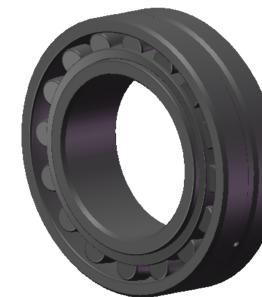


LILY BEARING



D1:	≈74.3	mm	Shoulder/Recess Dia of Outer Ring
d1:	≈49.9	mm	Shoulder Dia of Inner Ring
b:	6	mm	Width Of Lubrication Groove
K:	3	mm	Dia of Lubrication Hole
R _{1, 2} :	min 1.5	mm	Chamfer Dimension

LILY[®]

SHANGHAI LILY BEARING LIMITED

Email: lilybearing@lily-bearing.com

Part
Number

22308 E Spherical Roller Bearings