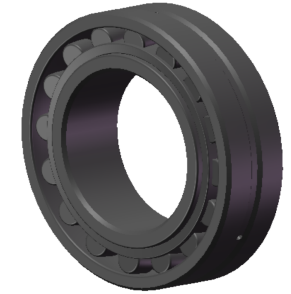


LILY BEARING



Tapered Bore, Taper 1:12

D1:	≈317	mm	Shoulder/Recess Dia of Outer Ring
d1:	≈224	mm	Shoulder Dia of Inner Ring
b:	22.3	mm	Width Of Lubrication Groove
K:	12	mm	Dia of Lubrication Hole
R _{1,2} :	min 4	mm	Chamfer Dimension

LILY[®]

SHANGHAI LILY BEARING LIMITED

Email: lilybearing@lily-bearing.com

Part
Number

22336 CCKJA/W33VA405
Spherical Roller Bearings