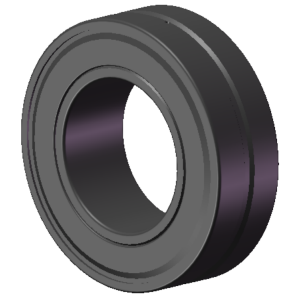


LILY BEARING



D1:	≈369	mm	Shoulder/Recess Dia of Outer Ring
d1:	≈289	mm	Shoulder Dia of Inner Ring
b:	16.7	mm	Width Of Lubrication Groove
K:	9	mm	Dia of Lubrication Hole
R _{1,2} :	min 4	mm	Chamfer Dimension

LILY[®]

SHANGHAI LILY BEARING LIMITED

Email: lilybearing@lily-bearing.com

Part
Number

23052-2CS5/VT143
Spherical Roller Bearings