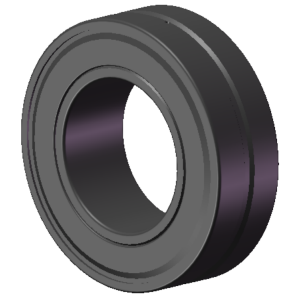


LILY BEARING



- D1: ≈226 mm Shoulder/Recess Dia of Outer Ring
- d1: ≈168 mm Shoulder Dia of Inner Ring
- b: 11.1 mm Width Of Lubrication Groove
- K: 6 mm Dia of Lubrication Hole
- R_{1,2}: min 2.1 mm Chamfer Dimension

LILY[®]

SHANGHAI LILY BEARING LIMITED
Email: lilybearing@lily-bearing.com

Part
Number

23130-2CS5/VT143
Spherical Roller Bearings