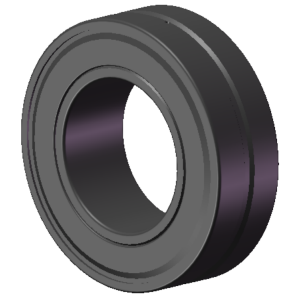


LILY BEARING



$D1$:	≈ 306	mm	Shoulder/Recess Dia of Outer Ring
$d1$:	≈ 227	mm	Shoulder Dia of Inner Ring
b :	16.7	mm	Width Of Lubrication Groove
K :	9	mm	Dia of Lubrication Hole
$R_{1,2}$:	min 3	mm	Chamfer Dimension

LILY[®]

SHANGHAI LILY BEARING LIMITED

Email: lilybearing@lily-bearing.com

Part
Number

23140-2CS5/VT143
Spherical Roller Bearings