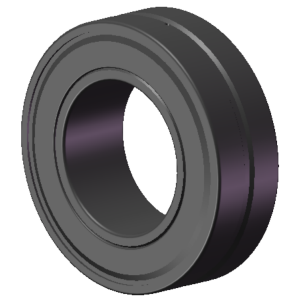


LILY BEARING



D1:	≈209	mm	Shoulder/Recess Dia of Outer Ring
d1:	≈147	mm	Shoulder Dia of Inner Ring
b:	8.3	mm	Width Of Lubrication Groove
K:	4.5	mm	Dia of Lubrication Hole
R _{1,2} :	min 3	mm	Chamfer Dimension

LILY[®]

SHANGHAI LILY BEARING LIMITED

Email: lilybearing@lily-bearing.com

Part
Number

23226-2CS5/VT143
Spherical Roller Bearings