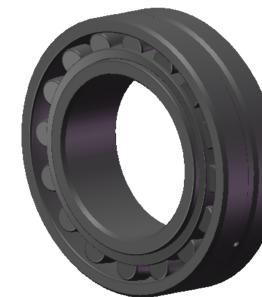


LILY BEARING



D1:	≈175	mm	Shoulder/Recess Dia of Outer Ring
d1:	≈145	mm	Shoulder Dia of Inner Ring
b:	6	mm	Width Of Lubrication Groove
K:	3	mm	Dia of Lubrication Hole
R _{1,2} :	min 2	mm	Chamfer Dimension

LILY[®]

SHANGHAI LILY BEARING LIMITED

Email: lilybearing@lily-bearing.com

Part
Number

24026/C3W33VA9B1
Spherical Roller Bearings