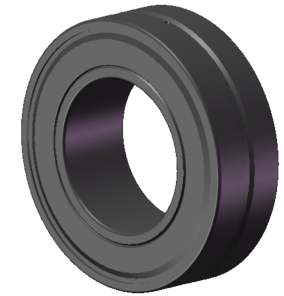


LILY BEARING



- D1: ≈110 mm Shoulder/Recess Dia of Outer Ring
- d1: ≈76.5 mm Shoulder Dia of Inner Ring
- b: 6 mm Width Of Lubrication Groove
- K: 3 mm Dia of Lubrication Hole
- R_{1,2}: min 1.5 mm Chamfer Dimension

LILY[®]

SHANGHAI LILY BEARING LIMITED

Email: lilybearing@lily-bearing.com

Part
Number

BS2-2213-2RS/VT143
Spherical Roller Bearings